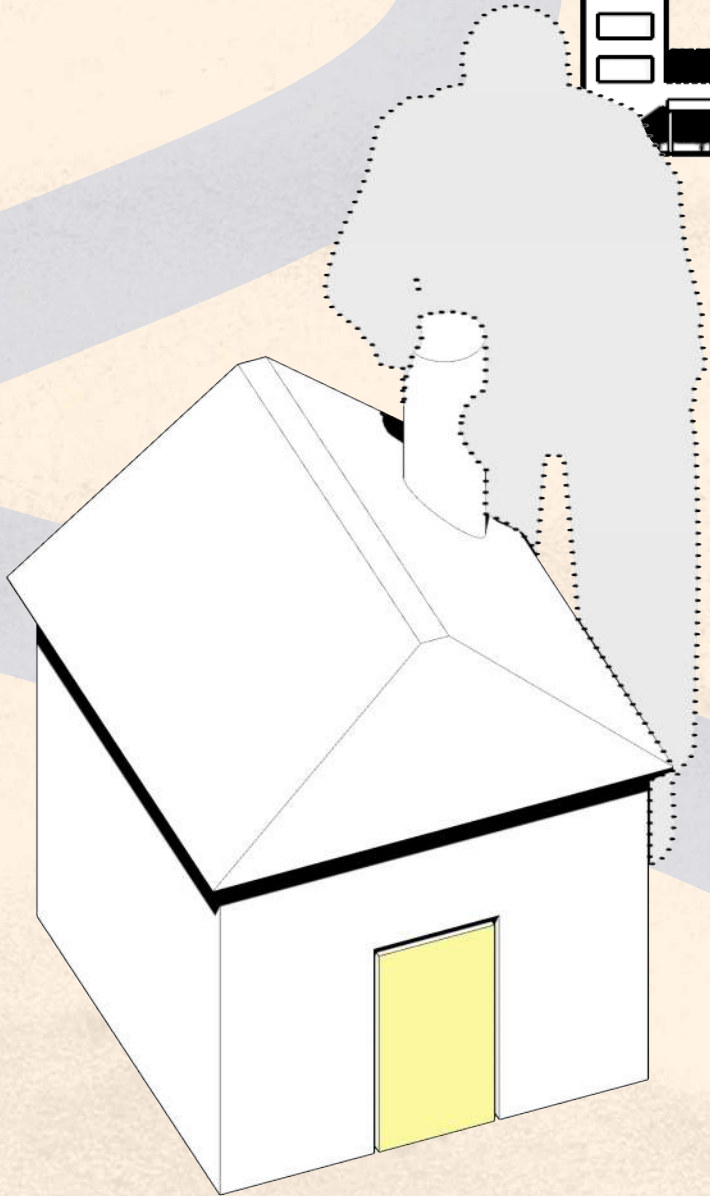


ARCHITECTURE COMPETITION

\$3000 USD prize

25 awards across 6 categories

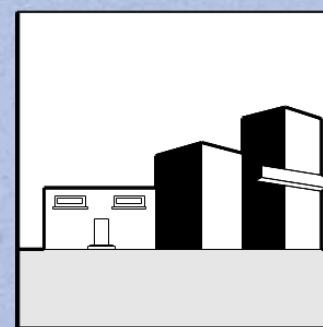
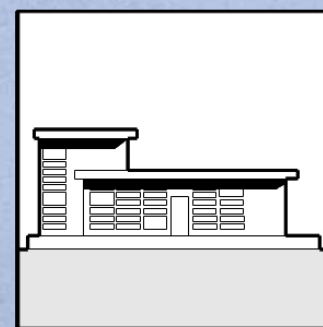
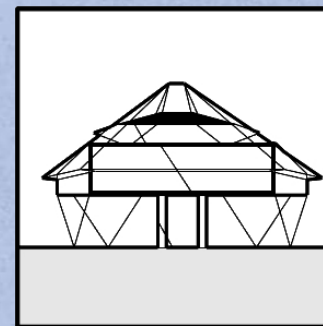
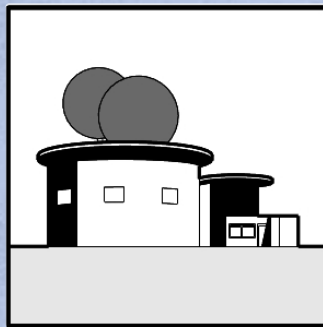
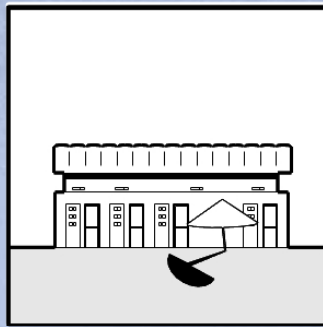


2026/27

INTERNATIONAL FORUM FOR ARCHITECTURE



TABLE OF CONTENTS



OVERVIEW

103

DESIGN CONSIDERATIONS

104

ELIGIBILITY

105

DELIVERABLES

106

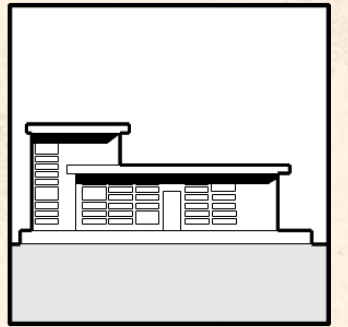
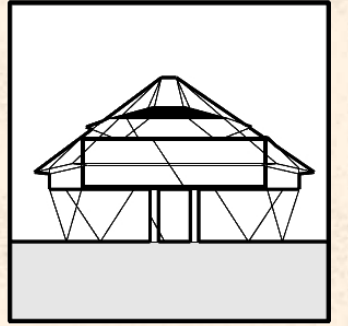
SCHEDULE

107

FAQ

108

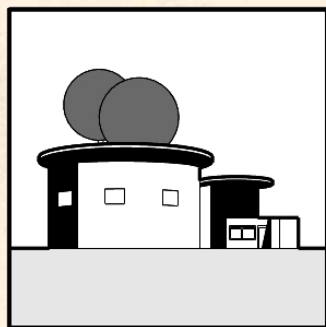
OVERVIEW



To live in a 21st-century city is to be intimately familiar with spatial optimization. An occupant's attempt to cram the detritus of modern life into a limited footprint often proves dissatisfying, as true efficiency is best achieved in the design stage. With programmatic efficiency at the forefront of the design process, a small space can become a dignified, livable home despite its dimensional limitations.

Beyond innovations in space planning, small homes also present opportunities for designs that interact gently with their environment. As these compact typologies contain all the programmatic requirements of a typical residence, albeit on a smaller scale, they serve as effective testing grounds for new technologies and passive mechanisms that might later be implemented on larger projects.

With all this in mind, the refinement of the tiny house typology is a prescient topic with infinite potential for innovation.



can a home be 28 m²?

DESIGN CONSIDERATIONS

ONE OVERALL WINNER

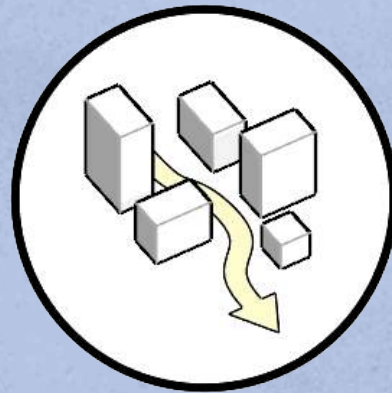
PLUS **ADDITIONAL AWARDS** FOR STAND OUT ENTRANTS IN THE FOLLOWING CATEGORIES:

ENVIRONMENTAL STEWARDSHIP



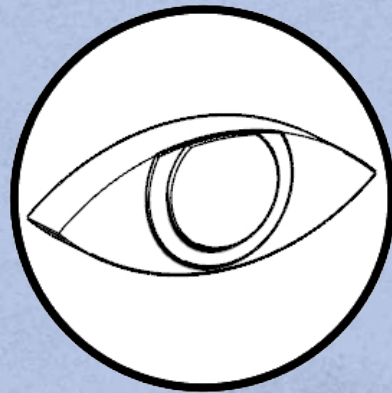
- Prioritizes net-zero or net-positive energy, water harvesting, and waste reduction.
- Emphasizes low-carbon, recycled, or locally sourced materials with a plan for disassembly.
- Minimizes site disruption and actively enhances local biodiversity and microclimates.

INTEGRATION WITH URBAN FABRIC



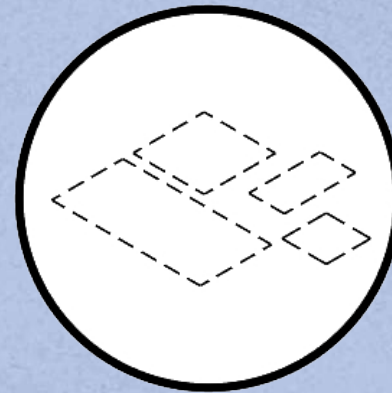
- Respects, complements, or meaningfully challenges the existing neighborhood character and scale.
- Optimizes the transition between the microhome and the streetscape, fostering community connection.
- Demonstrates how leftover, awkward, or underutilized urban spaces can be successfully activated.

REALISM IN REPRESENTATION



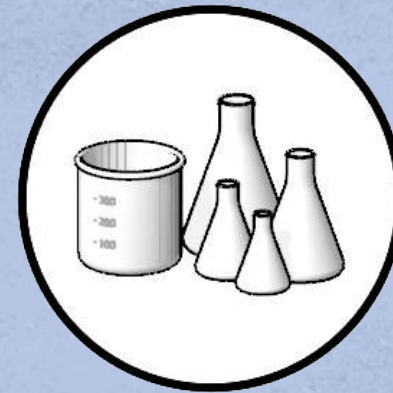
- Utilizes honest materiality with accurate textures, joints, and structural depths in the drawings.
- Factors in realistic spatial constraints, egress, and accessibility requirements without sacrificing design.
- Renders are made to look exceptionally true-to-life

PROGRAMMATIC INNOVATION



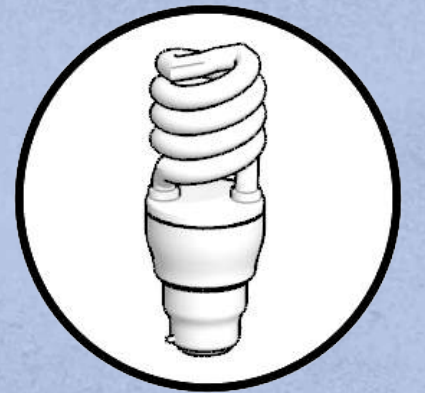
- Utilizes multi-functional, transforming, or kinetic elements to maximize a restrictive footprint.
- Redefines how a tiny-home adapts to changing demographic needs (e.g., live-work, multi-generational).
- Proposes clever boundaries between private living and shared communal resources or amenities.

SPECULATIVE BUILDING SCIENCE



- Explores next-generation insulation, smart facades, or biomimetic skins that respond to weather.
- Integrates emerging off-grid technologies, localized grids, or automated climate control.
- Anticipates future environmental shifts, ensuring durability against extreme weather events.

NOVEL VISUALIZATION



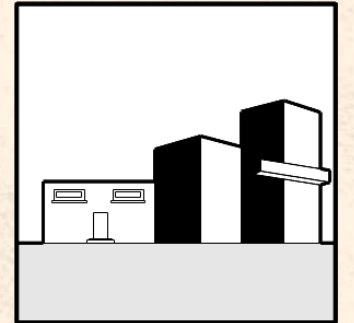
- Uses atmospheric rendering, unique perspectives, or graphic styles to communicate the “feeling” of the space.
- Employs diagrammatic precision to explain complex spatial mechanics and architectural ideas instantly.
- Masters composition, lighting, and digital craft to push the boundaries of traditional architectural representation.

ELIGIBILITY

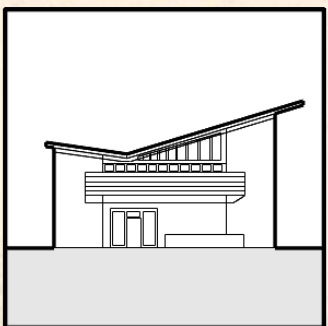
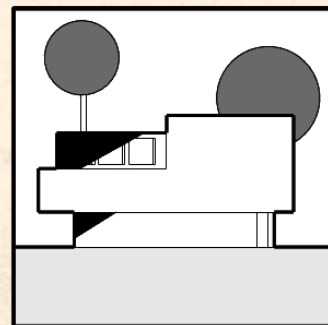
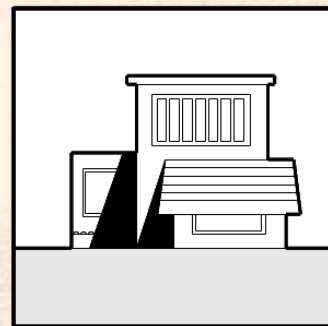
who can enter

Open to All: This competition is completely free and open to anyone globally—including students, emerging designers, licensed professionals, multidisciplinary teams, or enthusiasts.

Team Size: You may participate as an individual or as a team. There is no limit on the number of team members.



what can you enter



Re-use Existing Work: We welcome and encourage the submission of existing projects. If you have designed a microhome for a university studio, a previous competition, or a client project, you are highly encouraged to submit it here.

Multiple Submissions: There is no limit to how many projects an individual or team can enter. Each unique project must be submitted as a separate entry.

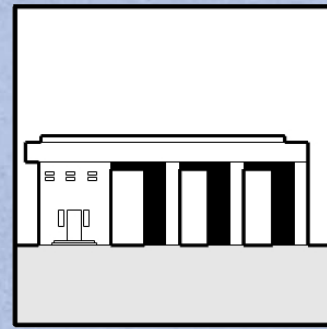
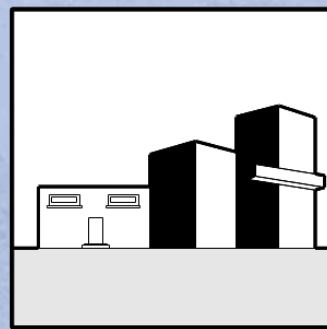
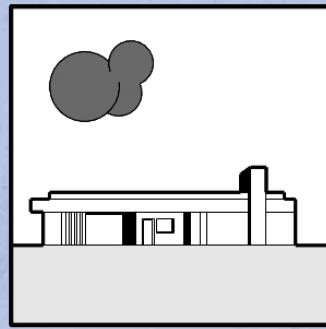
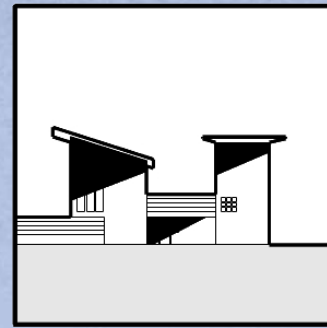
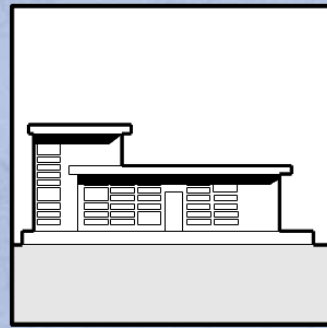
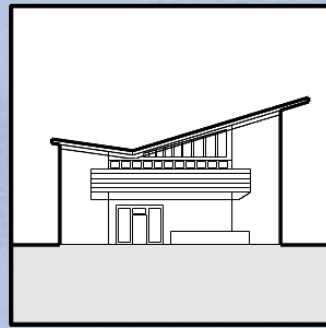
Use of AI: The use of AI tools (for visualization, text, or ideation) is fully permitted, as we acknowledge the proliferation of AI usage in professional practice. That said, see below:

Declaration: To maintain transparency, we simply ask that you check a box during submission or include a brief note on your board declaring which AI tools were used in your workflow.

where to enter

Submit entries to: competition@internationalforumforarchitecture.com

See next page for submission requirements



DELIVERABLES

Submission Format: Up to four presentation boards of any dimension and orientation (JPEG format, maximum 10 MB per file).

Content Flexibility: Mix and match any visual tools—such as plans, sections, renders, diagrams, or sketches—that best explain your design.

Anonymity: To ensure a fair, blind jury process, your submission boards must not contain any personal names, company logos, or school affiliations.

Language: All written text on the presentation boards must be in English.

Context & Integration: Visualizations, diagrams, or site plans showing how the design fits into its environment—whether a dense urban cityscape or a rural landscape.

Spatial Quality & Views: Internal and external perspectives (renders, sketches, or impressions) that highlight the home's spatial efficiency and interior atmosphere.

Architectural Drawings: Orthographic drawings (such as plans, sections, and elevations) of your choice to demonstrate layout, key design features, and accessibility.

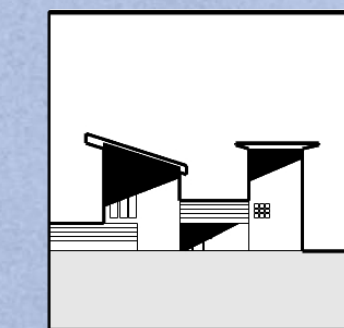
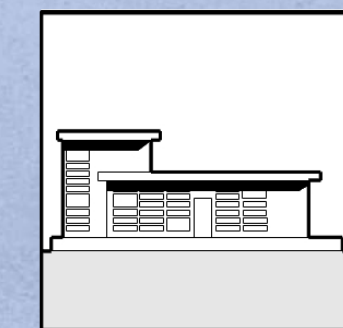
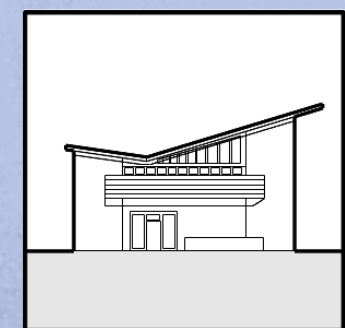
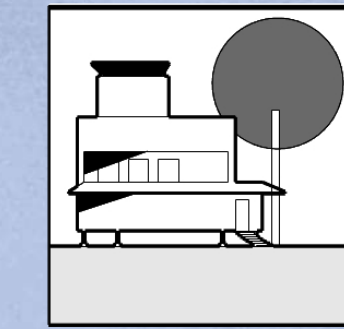
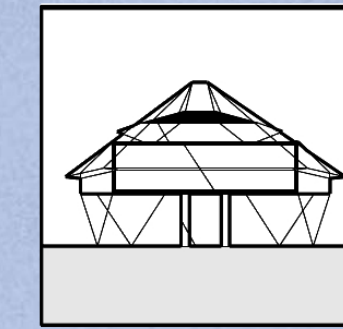
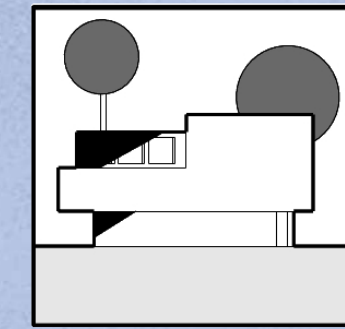
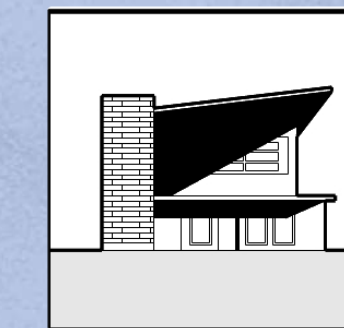
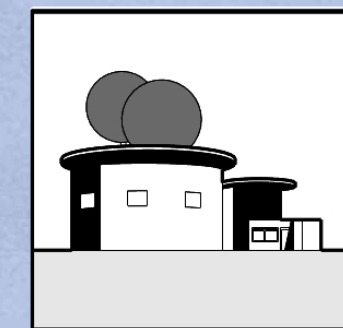
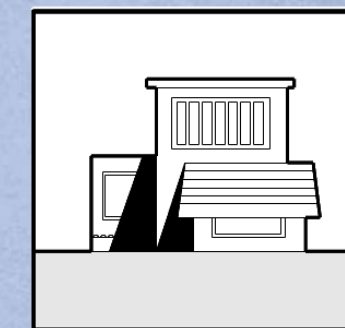
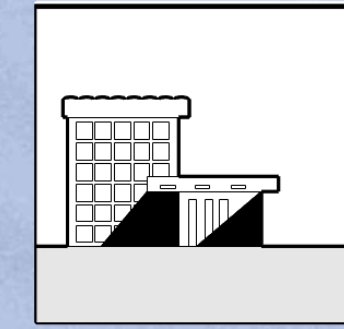
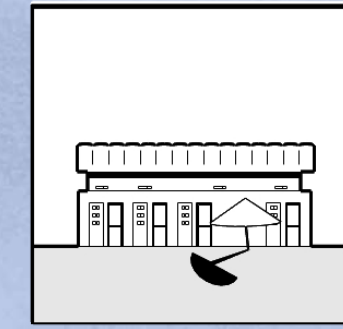
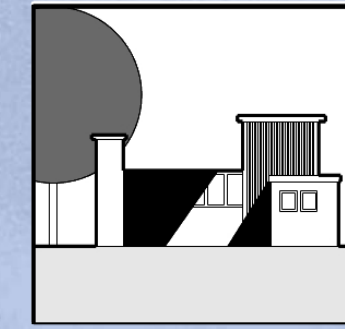
Environmental & Material Logic: A clear approach to sustainability, considering local climate responsiveness, energy efficiency, and low-impact material choices.

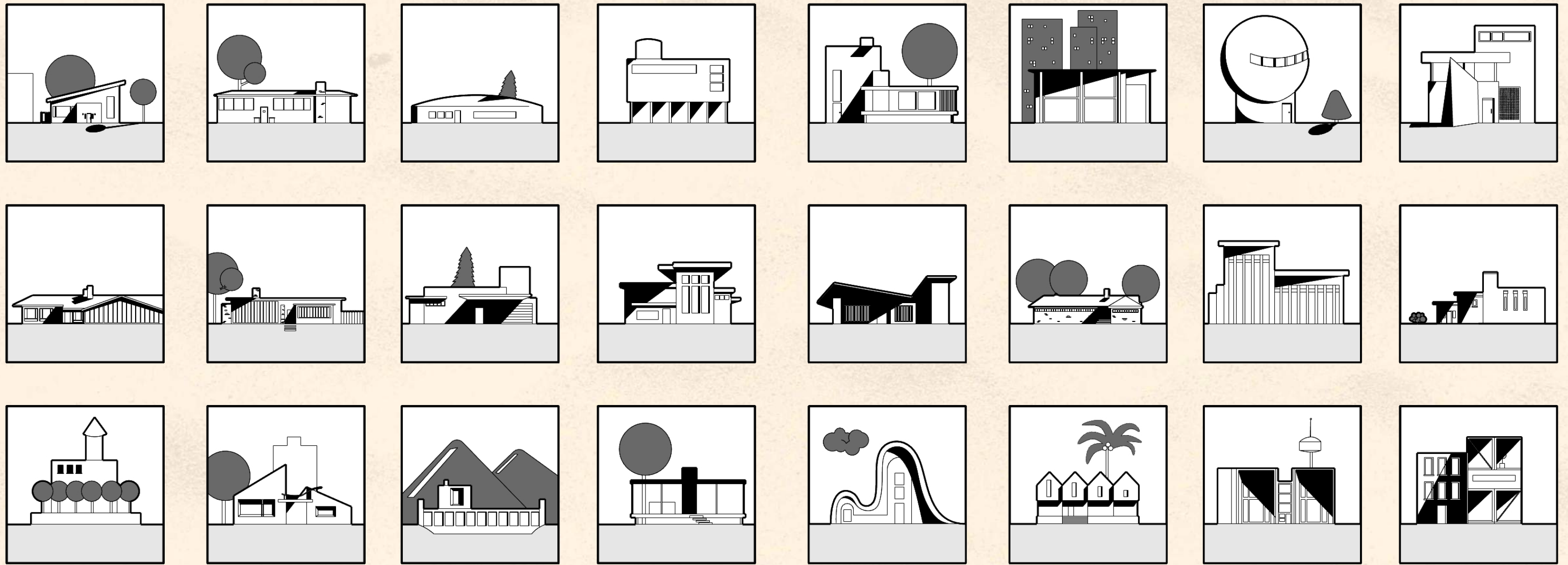
Feasibility & Operations: Brief insights into how the home is built and operated, covering construction logic, logistics, or basic maintenance strategies.

Suggested Content Deliverables:

- Site plan
- Plans
- Elevations
- Sections
- Details of key relationships
- Basic structural
- Diagrams
- Perspectives

Note: this list is not exhaustive or mandatory; the content is ultimately at the discretion of the entrant





SCHEDULE

Submit entry to competition@internationalforumforarchitecture.com

REGISTRATION
OPENS

REGISTRATION
DEADLINE

SUBMISSION
DEADLINE

WINNERS
ANNOUNCED



NOVEMBER 1
2026

MARCH 15
2027

APRIL 1
2027

Note: All deadlines are in Greenwich Mean Time (GMT)

International Forum for Architecture

FAQ

Who is eligible to enter this competition?

Anyone and everyone. The competition is completely open to the public globally. Whether you are an architecture student, a licensed professional, a multidisciplinary team, or a design enthusiast, you are welcome to participate.

Is there a registration or submission fee?

No. Participation is 100% free. There are no entrance fees or hidden costs at any stage of the competition. Submit to competition@internationalforumforarchitecture.com

Can I submit a project I designed for a previous competition or university studio?

Absolutely. We welcome repurposed projects or projects that have been submitted to other competitions, barring entries that have won top prize in other competitions. If you have an existing design from a school studio, a past client, or another competition, you are highly encouraged to adapt it and submit it here.

Can I enter more than one project?

Yes. There is no limit to the number of entries an individual or team can submit. However, each unique design must be registered and uploaded as a separate submission.

Am I allowed to use AI tools in my design workflow or visualizations?

Yes, AI tools are fully permitted for ideation, text, or rendering. The only requirement is that you declare which AI tools were used in the submission email.

What are the mandatory drawing types and scales required?

You can submit up to four presentation boards of any dimension and orientation. Files must be uploaded in JPEG format and cannot exceed 10 MB per file.

Can I submit an animation or video file?

No. The submission is strictly limited to static imagery. No video or audio files will be accepted.